

LLFK391 LLFK395

5RXK6HUYLFH6XUIDFH0RXW
5RXQRU6TXDUH6XUIDFH0RXWZLWK&RQXLW&FNRXW
\$DLODEOHLWZR)QVKHXLWK7ZR3ROFDUERQWHLIXVHU2SWLRQ

Light Source

- LE800-9: &5,0#075, &
- LE1200-9: &5,0#075, &
- LE1800-9: &5,0#075, &
- L1800819- 819: &5,73/0#0
- I240- 5HTXLUHV7ZR: 0DQVH/DPS1RW, BOXGHG

Notes:

Construction:

&RPSRVLWH5HVLQRQWUXFWLRQDNHVIRURUXVWRUFRUURVLRQ

Listing:

&L/VWHGIRU: HW/RFDWLRQ

Notable Options:

&PQ//DUH&U&W&DU5DWHGZKH&WWHGZLWKWKH

//PQ//LKW6RXUFHV

&SWLRQ00RWLRQ&H&RU\$DLODEOHIRU//

DQ/ 819/LKW6RXUFHV

&SWLRQOPHUI&F&FNXS\$DLODEOHIRU//

DQ/ 819/LKW6RXUFHV

&UHTXLUHV3LHFH024

&PSHUDWL&HPSHUDWXUH&WR&

Warranty/Certifications:

&DU:DUUDWR&PQ//

&DU:DUUDWR&OHUVLRQ

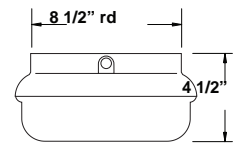
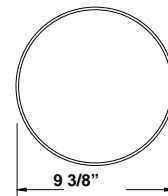
&DU:DUUDWR&OHUVLRQ



LLFK391



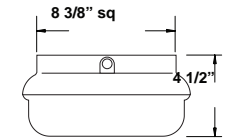
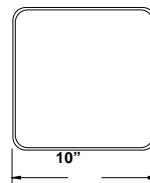
HCMT: 5"



LLFK395



HCMT: 5"



PART #	LIGHT SOURCE	CCT (LED ONLY)	FINISH	DIFFUSER	OPTION
LLFK391	LE800* LE1200* LE1800*	W- C-	B/-DFN	W- :KLWH	P1-0RWLRQ&H&RU EB1-PUHUI&F&FNXS
LLFK395	L1800819	W- C-	W#KLWH		LWE2-YZOP&5, VWDUDG7LWOH LCE2-YZOP&5, VWU 2: &PQ//DUH&U&W&DU5DWHGZKH&WWHGZLWKWKH ZLWKWKH,DQ//LKW6RXUFHV//LVWHG&U&W&DU 7ULDPLPL&D&H&GIRUR&XUV&H&DU//LPLWHG:DUUDWR
	I240				

*Motion Sensor and Emergency Backup for LE and L Versions Only

Recommended Dimmers

LE Series

LUTRON S-600H-WH, LUTRON LG-603PH-AL,
LEVITON 6631-LW, LUTRON DIVA DVCL-153P,
LUTRON DV6200P-WH, LUTRON SKYLARK S-600P

LWE/LCE

LEVITON IPL06-10Z, LEVITON 6674,
LEVITON DECORA 6672, LUTRON DVCL-153P,
LUTRON DIVA VCL-153P



&OL&R&PHUI&F&FNXS//
&7HVW6ZLWFK&K&DUH,QLFDWRU
&F&FNXS&UD
&1L&G9&W&WWHU
&KU5HFKDUH7LPH
&ELH&W7HPS&WR&
&U:DUUDWR



RoHS compliant



LLFK391 LLFK395

Rough Service Surface Mount

Round or Square Surface Mount with Conduit Knockouts.
Available in Two Finishes with Two Polycarbonate Diffuser Options.

Light Source

- LE800-120V/13W/80CRI/1140LM@3K, 1280LM@4K/TRIAC
- LE1200-120V/14W/80CRI/1430LM@3K, 1500LM@4K/TRIAC
- LE1800-120V/22W/80CRI/1950LM@3K, 2130LM@4K/TRIAC
- L1800UNV- UNV/22W/74CRI(TYP)/1740LM@4K, 1824LM@4K
- I240- Requires Two 40W Max E26 Base Lamp. (Not Included)

Notes:

Construction:

- Composite Resin Construction makes for no rust or corrosion.

Listing:

- UL Listed for Wet Locations

Notable Options:

- LLFK391 and LLFK395 are Energy Star Rated when fitted with the LE800, LE1200 and LE1800 Light Sources
- Optional Motion Sensor Available for LE800, LE1200, and L1800UNV Light Sources.
- Optional Emergency Backup Available for LE800, LE1200, and L1800UNV Light Sources.
- I240 requires 50 Piece MOQ
- LED Operating Temperature -40°C to +40°C

Warranty/Certifications:

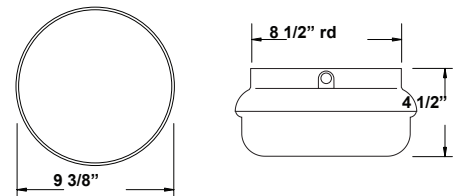
- 5 Year Warranty on LE800, LE1200 and LE1800
- 3 Year Warranty on L1800 Version
- 1 Year Warranty I175 Version.



LLFK391



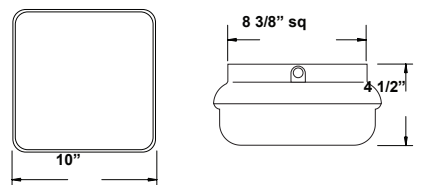
HCMT: 5"



LLFK395



HCMT: 5"



PART #	LIGHT SOURCE	CCT (LED ONLY)	FINISH	DIFFUSER	OPTION
LLFK391	LE800* LE1200* LE1800*	30K 40K	BLK- Black	W- White	P ¹ -Motion Sensor EB ¹ -Emergency Backup LWE ² -120v/9.5w/800lm@3K/90CRI Estar and Title 24 LCE ² -120v/9.5w/800lm@4K/80CRI Estar <small>²LWE and LCE Medium Base Lamps are available for purchase with the I160 and I260 Light Source. UL Listed. Energy Star. Triac Dimming. Rated for 15,000 Hours. 3 Year Limited Warranty</small>
LLFK395	L1800UNV	30K 40K	WH- White		
	I240				

¹Motion Sensor and Emergency Backup for LE and L Versions Only

Recommended Dimmers

LE Series

LUTRON S-600H-WH, LUTRON LG-603PH-AL, LEVITON 6631-LW, LUTRON DIVA DVCL-153P, LUTRON DV6200P-WH, LUTRON SKYLARK S-600P

LWE/LCE

LEVITON IPL06-10Z, LEVITON 6674, LEVITON DECORA 6672, LUTRON DVCL-153P, LUTRON DIVA VCL-153P



- 135 Min. of Emergency Backup LED
- Test Switch/LED Charge Indicator 4W
- LED Backup Array
- NiCd, 3.6 VDC Battery
- 24hr Recharge Time
- Ambient Temp: 0°C to +40°C
- 5yr Warranty



RoHS compliant

