

## LLFK391 LLFK395

Round or Square Surface Mount with Conduit Knockouts. Available in Two Finishes with Two Polycarbonate Diffuser Options.

**Construction:** Composite Resin Construction makes for no rust or corrosion.

### Light Source:

- **LE8:** 120V/13W/80CRI/1140LM@3K, 1280LM@4K/TRIAC
- **LE12:** 120V/14W/80CRI/1430LM@3K, 1500LM@4K/TRIAC
- **LE18:** 120V/22W/80CRI/1950LM@3K, 2130LM@4K/TRIAC
- **L18U:** 120~277V/22W/74CRI(TYP)/1740LM@4K, 1824LM@4K
- **I240-** Requires Two 40W Max E26 Base Lamp. (Not Included)

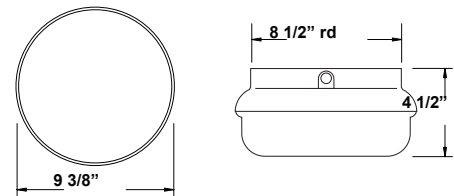
### Notes/Certifications/Warranty:

- LLFK391 and LLFK395 are Energy Star Rated when fitted with the LE8, LE12 and LE18 Light Sources
- Optional Motion Sensor Available for LE800, LE1200, and L1800UNV Light Sources.
- Optional Emergency Backup Available for LE800, LE1200, and L1800UNV Light Sources.
- I240 requires 50 Piece MOQ
- LED Operating Temperature -40°C to +40°C
- UL Listed for Wet Locations
- 5 Year Warranty on LE800, LE1200 and LE1800
- 3 Year Warranty on L1800 Version
- 1 Year Warranty I175 Version.

LLFK391



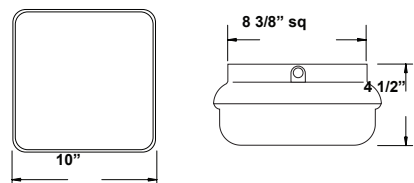
HCMT: 5"



LLFK395



HCMT: 5"



| PART #  | LIGHT SOURCE | CCT (LED ONLY) | FINISH                  | DIFFUSER | OPTION  |
|---------|--------------|----------------|-------------------------|----------|---|
| LLFK391 | LE8*         | W-(4K)         | BLK- Black<br>WH- White | W- White | <b>MS<sup>1</sup></b> -Motion Sensor<br><b>EB<sup>1</sup></b> -Emergency Backup<br><b>LWE<sup>2</sup></b> -120v/9.5w/800lm@3K/90CRI<br>Estar and Title 24<br><b>LCE<sup>2</sup></b> -120v/9.5w/800lm@4K/80CRI<br>Estar<br><small><sup>2</sup>LWE and LCE Medium Base Lamps are available for purchase with the I160 and I260 Light Source. UL Listed. Energy Star. Triac Dimming. Rated for 15,000 Hours. 3 Year Limited Warranty</small> |
| LLFK395 | LE12         | C-(4K)         |                         |          |   |
|         | LE18         |                |                         |          |   |
|         | L18U         | W-(3K)         |                         |          |   |
|         |              | C-(4K)         |                         |          |   |
|         | I240         |                |                         |          |   |

<sup>1</sup>Motion Sensor and Emergency Backup for LE and L Versions Only

### Recommended Dimmers

#### LE Series

LUTRON S-600H-WH, LUTRON LG-603PH-AL, LEVITON 6631-LW, LUTRON DIVA DVCL-153P, LUTRON DV6200P-WH, LUTRON SKYLARK S-600P

#### LWE/LCE

LEVITON IPL06-10Z, LEVITON 6674, LEVITON DECORA 6672, LUTRON DVCL-153P, LUTRON DIVA VCL-153P



- 135 Min. of Emergency Backup LED
- Test Switch/LED Charge Indicator 4W
- LED Backup Array
- NiCd, 3.6 VDC Battery
- 24hr Recharge Time
- Ambient Temp: 0°C to +40°C
- 5yr Warranty