

LLFL371 LLFL372

Modern Bulkhead

Enclosed and Gasketed Wall or Ceiling Mount. Available in Two Finishes with a White Polycarbonate Diffuser.

Light Source

- **LE1200***-120V/14W/80CRI/1430LM@3K, 1500LM@4K/TRIAC
- **LE1800***-120V/22W/80CRI/1950LM@3K, 2130LM@4K/TRIAC
- **LE2600***-120V/32W/80CRI/2700LM@3K, 2750LM@4K/TRIAC
 - LE1200, LE1800, LE2600 are Energy Star Rated

- **UNV1800-** UNV/22W/74CRI(TYP)/1740LM@3K, 1824LM@4K

Construction:

- Powder Coated Cast Aluminum

Notes/Warranty/Certifications

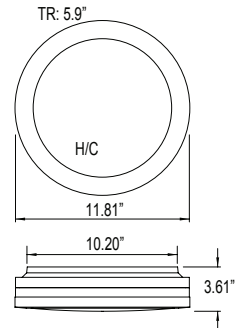
- LED Operating Temperature -40°C to +40°C
- ETL Listed for Wet Locations (IP65)
- 5 Year Warranty on LE1200, LE1800, and LE2600
- 3 Year Warranty on L1800 Version

Options:

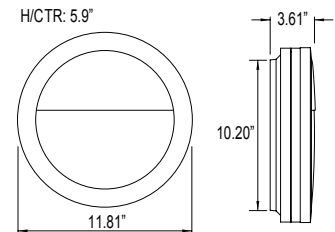
- Optional Motion Sensor.
- Optional Emergency Backup Available for LE1200, LE1800, and LE2600 Light Sources.



LLFL371



LLFL372



PART #	LIGHT SOURCE	CCT (LED ONLY)	FINISH	DIFFUSER	OPTION
LLFL371	LE12* LE1800*	30K 40K	BLK- Black WHT- White	W- White	MS ¹ - Motion Sensor EB ¹ - Emergency Battery Backup <small>¹Motion Sensor and Emergency Backup for LE1200 and LE1800 Versions Only</small>
LLFL372	LE2600*				
	UNV1800	30K 40K			MS- Motion Sensor

Recommended Dimmers	
LE Series	LUTRON S-600H-WH, LUTRON LG-603PH-AL, LEVITON 6631-LW, LUTRON DIVA DVCL-153P, LUTRON DV6200P-WH, LUTRON SKYLARK S-600P



- 135 Min. of Emergency Backup LED
- Test Switch/LED Charge Indicator 4W
- LED Backup Array
- NiCd, 3.6 VDC Battery
- 24hr Recharge Time
- Ambient Temp: 0°C to +40°C
- 5yr Warranty

