

## LLINSQ25-R

Recessed LED Architectural Linear

**Housing:** Cold-rolled steel with die-formed white painted steel reflector

**Finish:** White is standard; Other Finishes by Request

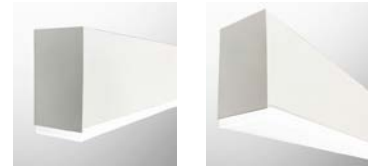
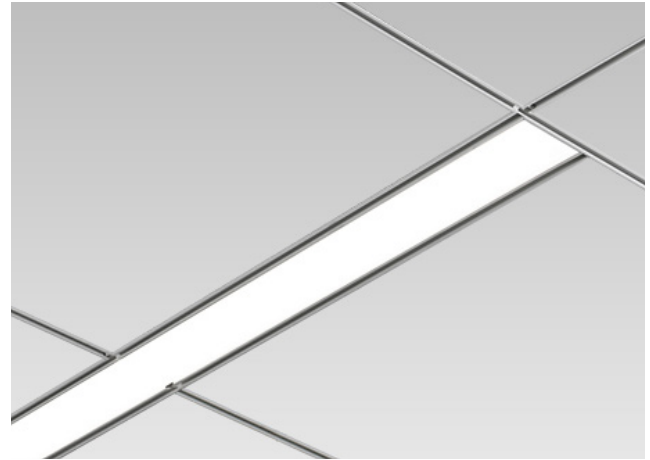
**Lens:** Snap in acrylic in a matte finish

**Distribution :** Direct Only

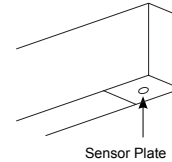
**Mounting:** Compatible with most ceiling including T-bar, screw slot and drywall.

### LED & Electrical:

- LM80
- 80 CRI Standard
- L70 reported: > 60,000 @ 55°C
- Nominal Lamp Life: 100,000 hours.
- High power factor electronic driver, operate from a 120 ~ 277 Vac input range, 50 / 60 Hz.
- Features included over voltage protection, surge, short circuit protection and over load protection.
- 0-10V dimming (*Std*)
- Power Factor: +0.95
- Operating Temperature: 4°F (-20°C) ~ 122°F (50°C).
- <ELCU-200> Option
  - Guarantees emergency lighting remains ON or is turned on when power to the control device is lost.
  - Interfaces with fire alarm panel or security system.



DROP LENS



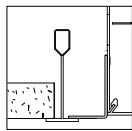
### Warranty/Certifications:

- 5 years limited warranty.
- UL/CUL listed for damp locations
- Listed to UL 1598 and UL 875
- UL listed for use in emergency circuits
- DLC listed
- CEC Compliant EM (*please contact for more information*)
- Assembled in USA (*optional*)
- CCEA City of Chicago Environmental Air approved (*optional*)



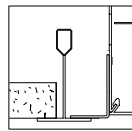
### MOUNTING DETAILS

9/16" Grid Mounting Options



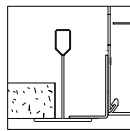
9/16" Grid, Standard Tile:  
RCGR in part #

15/16" Grid Mounting Options



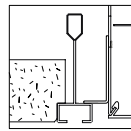
15/16" Grid, Standard  
Tile: Specify RCGR in part #

1" Grid Mounting Options



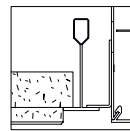
1" Grid, Standard Tile:  
Specify RCGR in part #

9/16" Screw Slot Mounting



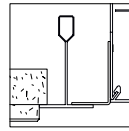
Screw Slot Grid:  
Specify SST in part #

9/16" T-bar with Tegular Tile



9/16" T-bar with Tegular  
Tile: Specify SST in part #

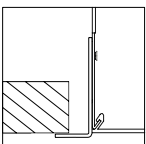
15/16" Grid with Tegular Tile



15/16" Grid with Tegular  
Tile: Specify RCGR in part #

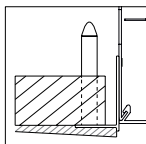
### DRYWALL RECESSED CEILING

Flanged Trim



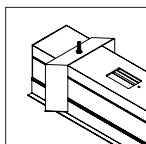
Exposed Flange Detail:  
Specify FT in part #

Spackle Flanged Trim



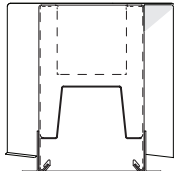
Specify RSF in part #

Rotating Crossbar

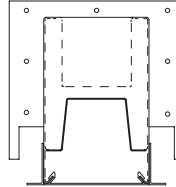


Rotating Crossbar is provided  
with RFL and RSF type  
as standard

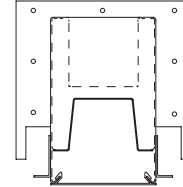
Drywall



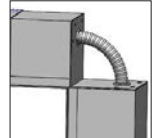
T-bar (RCGR)



Screw Slot (SST)



CW90



**Ordering Information**

MODEL	LENGTH	DIRECT	CCT	VOLTAGE
<b>LLINSQ25-RFL</b> 1/2 Flange (Std)	2 2 Foot 3 3 Foot	<b>D734L</b> 734 lm/ft (18W per 4ft) <b>D924L</b> 924lm/ft (27W per 4ft) <b>D991L</b> 991 lm/ft (36W per 4ft)	<b>27K</b> <b>30K</b> <b>35K</b> <b>40K</b> <b>50K</b>	<b>UNV</b> 120-277V <b>347</b> 347V (Cannot work with Emergency Battery Backup)
<b>LLINSQ25-RSF</b> Trimless Spackle Flange	4 4 Foot 6 6 Foot 8 8 Foot	<b>D1467L</b> 1467 lm/ft (54W per 4ft) <b>CLWP</b> Custom Lumen-Wattage Package (We can offer a custom lumen /ft or overall wattage package per your spec. Ask your Lumencia rep for more information)	<i>* If Different CCT needed for Direct/Indirect XXXX **only available with CR190</i>	
<b>LLINSQ25-RGR</b> Recessed Grid Mount - includes 9/16", 15/16", 1" T-bar	<b>CLXX</b> (Custom Length)			
<b>LLINSQ25-RSST</b> 9/16" Screw Slot, 9/16" T-bar with Tegular tile ceiling				

DRIVERS	EM	EM QTY	OPTIONAL CONNECTORS
<b>Blank</b> 0-10 Dim, 1% Dims Both Simultaneously (Std.) Lutron Mark VII Dimmers and Lutron IP710-DLZ <b>ES566</b> eldoLED SOLOdrive Natural Dimming to dark, 0-10V, 100% ~ 0.1% dim <b>SD40</b> 40% / 100% Bi-Level Step dim <b>SDXX</b> XX% / 100% Bi-Level Step dim (Specify XX : 10% ~ 70%) <b>PHSR</b> Philips Xitanium Sensor-Ready, Dali 5%~100% dim. <b>PHDL</b> Philips Xitanium DALI driver, Dim to 5% <b>TRIAC</b> Triac Dim. (120V only) <b>TD30/70</b> 30% / 70% / 100% Tri-Level Step dim <b>TDXX/YY</b> XX% / YY% / 100% Tri-Level Step dim (Specify XX, YY : 10% ~ 70%) <i>Specialty Drivers by Request. Contact your Lumencia Rep for more information.</i>	<b>Blank</b> None (Std) <b>EM8</b> 1296 LUMEN EM Battery Backup (CEC Compliant EM)* <b>EM15</b> 2430 LUMEN EM Battery Backup (CEC Compliant EM)* <b>EM20</b> 3240 LUMEN EM Battery Backup (CEC Compliant EM)* <b>EM25</b> 4050 LUMEN EM Battery Backup (CEC Compliant EM)* <i>* EM can only be remote mounted for 3ft configuration. Remote box is provided by others. If Chicago Plenum is required, add -CCEA</i>	<b>xSE</b> Number of EMs for Con.Run <i>*Must provide locations. *EM for 4' luminaire. *Separate section required 2SE or specified. Must specify voltage, not available with 347V.</i>	<b>STB</b> Slip Through Bracket (Standard with RFL and RSF Mounting Options) <i>Lumencia offer connectors to make custom shapes, contact us for more information.</i>

OPTIONS	FIXTURE <i>Std is White Fixture, White Cord, White Canopy</i>
<b>9</b> 90 CRI <b>7W</b> <b>Optional</b> 7 Years Limited Warranty * <b>10W</b> <b>Optional</b> 10 Years Limited Warranty * <b>ELCU-200</b> Fail-to-on Emergency lighting, UL924 (Shipped Separately) <b>GLR</b> Fast Blow Fuse (Not available for 347V) <b>GMF</b> S.Low Blow Fuse (Not available for 347V) <b>ARRA</b> Assembled in USA for Buy American Act <b>AMS</b> Occupancy Sensor w/ Daylight Harvesting (max. 8' detection mounting height with 13' coverage. Standard will be ON/OFF sensor with dimming wires provided for dimmer switch. For sensor dimming control, please select additional "SO" option) <b>DPMS</b> Daylight Dimming Photo Sensor (0-10 VDC Control, LSR-301-S required. Automatic on/off is not available.) <b>SO</b> Dimming Wires connected to Sensor Only (Available with AMS and DPMS option) <b>LSR-301-S</b> Setup Remote Control for DPMS (Required for DPMS) <b>LSR-301-P</b> Occupant Remote Control for DPMS <b>DROP</b> 1/2" drop lens <b>E1F</b> End feed on one end (Pre-drilled hole for 1/2" fitting) <b>E2F</b> End feed on both ends (Pre-drilled holes for 1/2" fitting)	<b>Blank</b> Matte White RAL #9003 (Std) <b>*BLK</b> Black (RAL #9011) <b>*SV</b> Silver (RAL #9022) <b>**CC</b> Custom Color <b>*CSS</b> Custom Canopy Color (White is Std.) <b>*AMB</b> Anti-Microbial Coating (Matte Skye White) <i>* Additional Charge. ** Additional charge &amp; set up fee.</i>

\*Extended limited warranties covers electrical parts only and does not apply to labor, equipment lease, or defect from improper installation or operation

**Compatible Dimmers:**

Standard 0-10 Dim, 1% Dims Both Simultaneously (Std.): Lumencia recommends Lutron Mark VII Dimmers and Leviton IP710-DLZ.

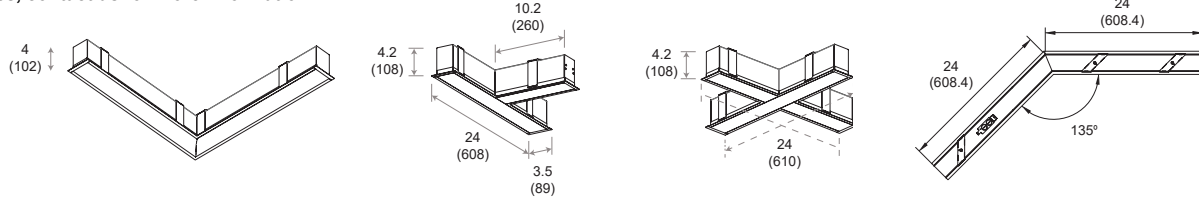
All others: Contact your Lumencia Rep for compatibility.

**Controls:**

Ask your Lumencia rep about compatibility with your control system

### LIT CONNECTOR

Lumencia offer connectors to make custom shapes, contact us for more information.



### CONFIGURATIONS

\* Based on 4FT, 4000K calculation.

Series	Size	Model #	AC Input	Fixture Lumen Output (4000K)		Lumen Efficiency (4000K)
LLINSQ25-RC	4'	D734L	19.8W	2562.12 lm (100% Down)	2562.12 lm	129.40 lm/W
		D924L	29.7W	3283.33 lm (100% Down)	3283.33 lm	110.55 lm/W
		D991L	39.6W	4244.72 lm (100% Down)	4244.72 lm	107.19 lm/W
		1467L	52.8W	5623.2 lm (100% Down)	5623.2 lm	106.5 lm/W

### OUTPUT CURRENT

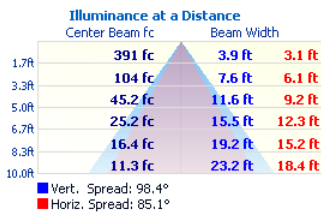
SW1	SW2	Bi-Level		Tri-Level (Default)	
		Config Range	Default	Config Range	Default
Close	Open	10% -	40%	10% - 70%	30%
Open	Close	10% -	40%	10% - 70%	70%
Close	Close	100%	100%	100%	100%
Open	Open	0%	0%	0%	0%

CCT	Multiplier		
	3000K	3500K	5000K
Down only	0.9642	0.9822	1.0357

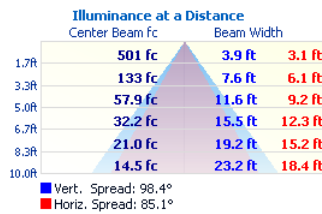
### PHOTOMETRIC DATA:

\* Based on 4FT, 4000K calculation.

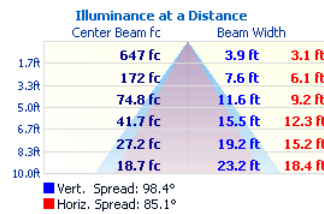
#### LLINSQ25-RC-4-D734L



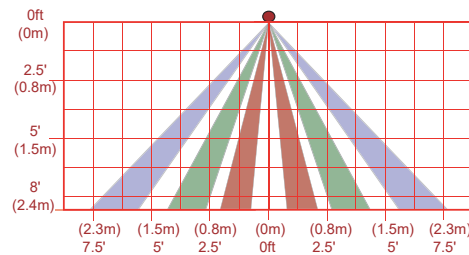
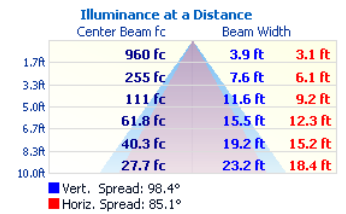
#### LLINSQ25-RC-4- D924L



#### LLINSQ25-RC-4-D991L



#### LLINSQ25-RC-4-D1467L

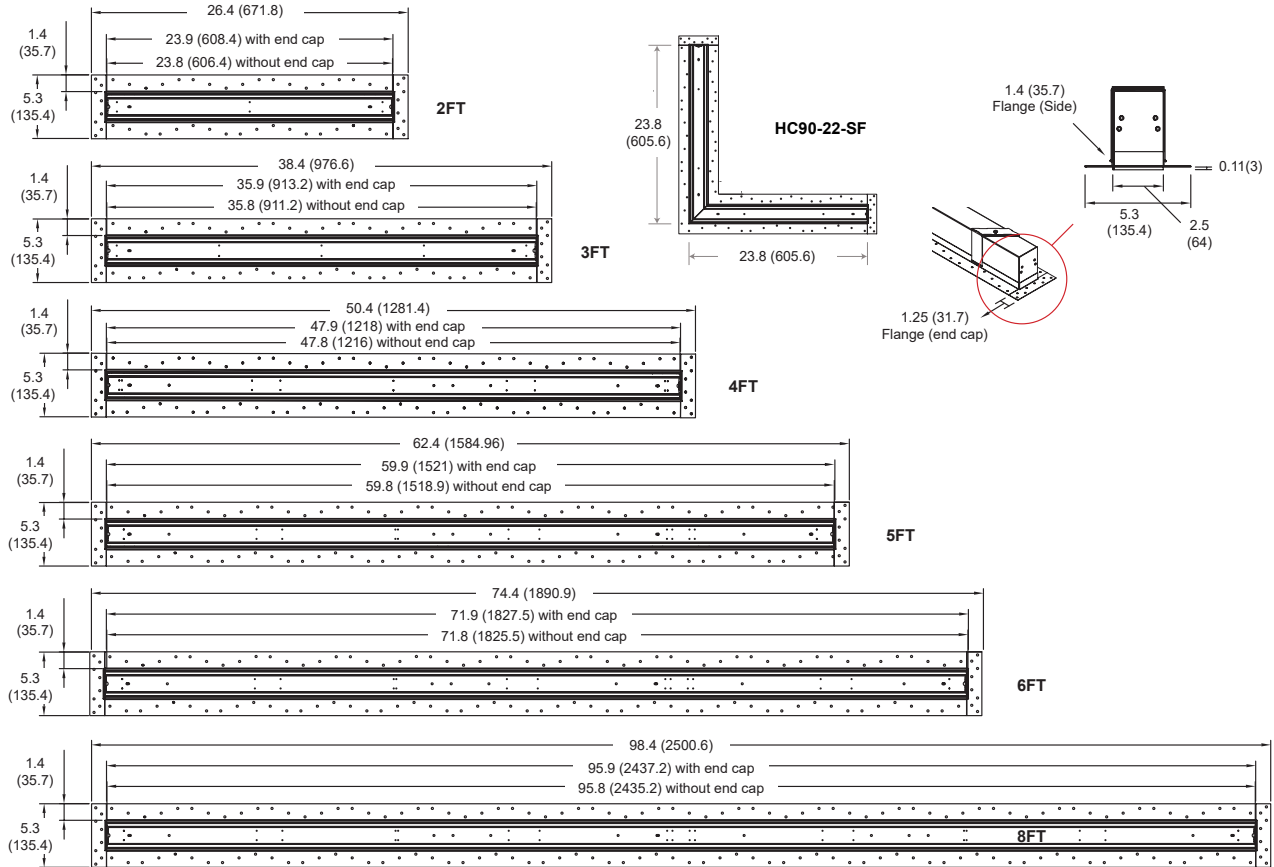


#### AMS coverage pattern (side view)

\* The coverage shown in the diagram is maximum. AMS is designed to detect small motion when mounted within 6' occupants.

### LLINSQ25-RC-SF

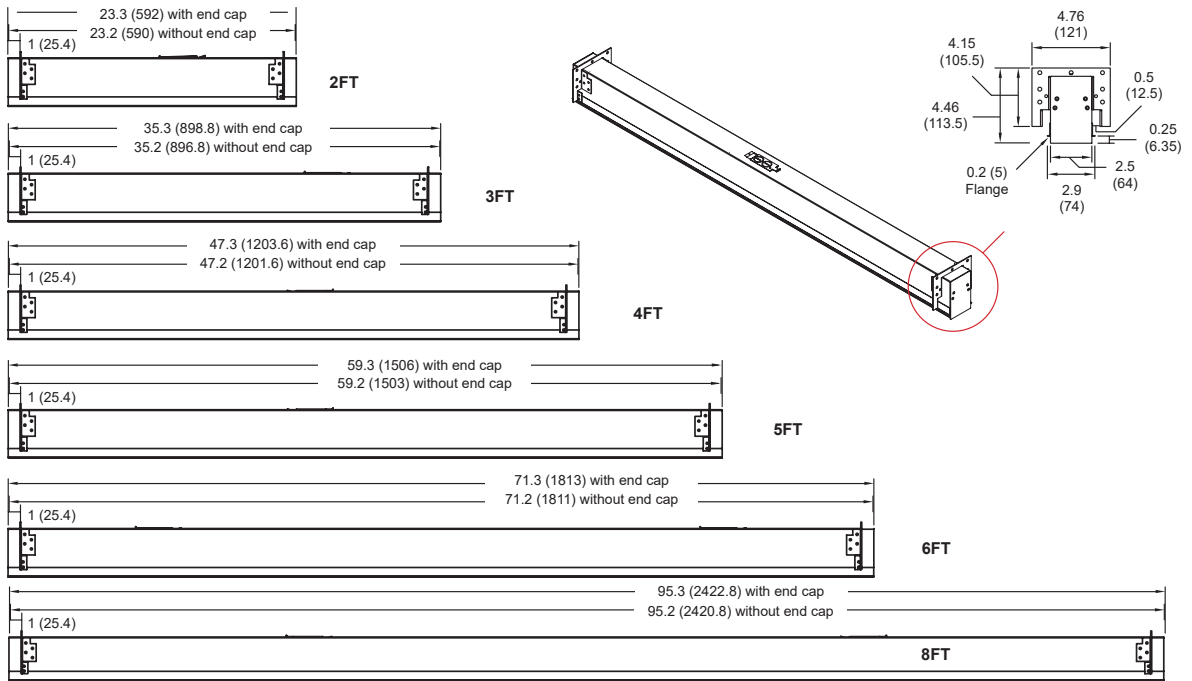
All dimensions are in inches (millimeters).



### LLINSQ25-RC-SS

\* All -CONs are designed to fit the standard ceiling grid.

All dimensions are in inches (millimeters).



Job Name: \_\_\_\_\_

Type: \_\_\_\_\_

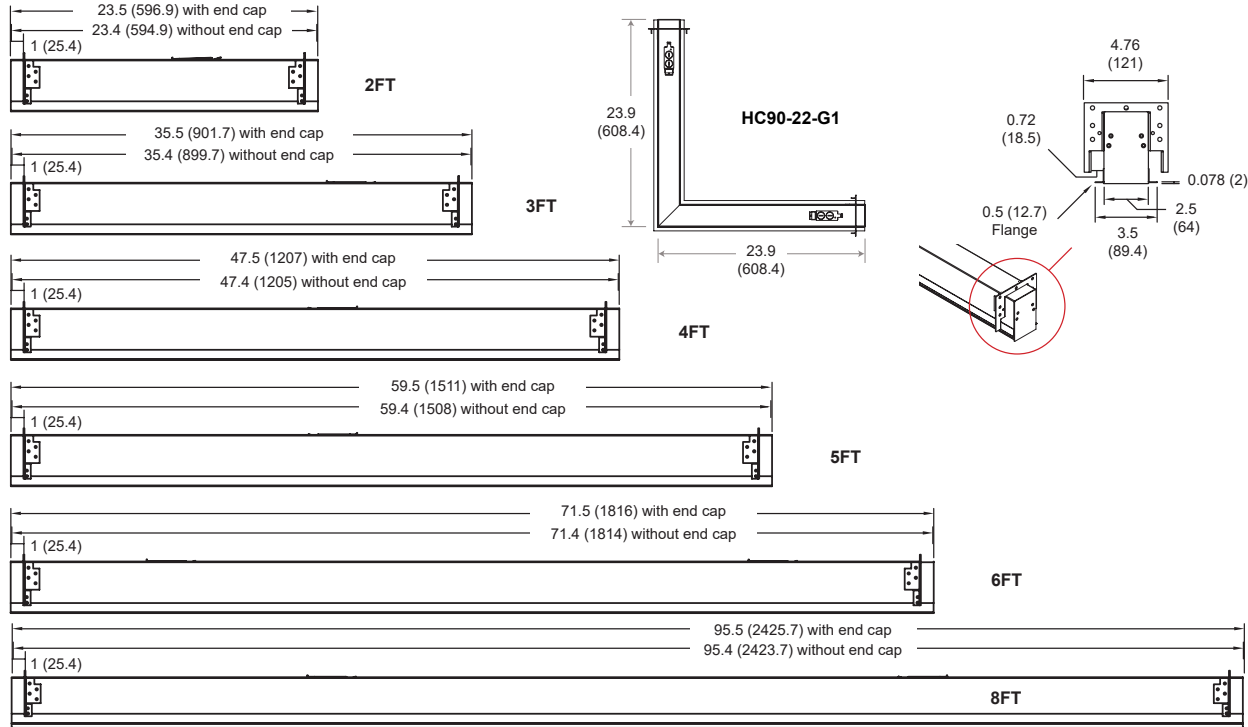
Part #: \_\_\_\_\_

Notes: \_\_\_\_\_

\* All -CONs are designed to fit the standard ceiling grid.

All dimensions are in inches (millimeters).

**LLINSQ25-RC-G1**



**LLINSQ25-RC-FT**

