

LLINSQ4-R

Recessed LED Architectural Linear

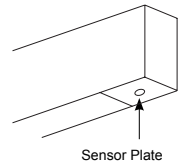
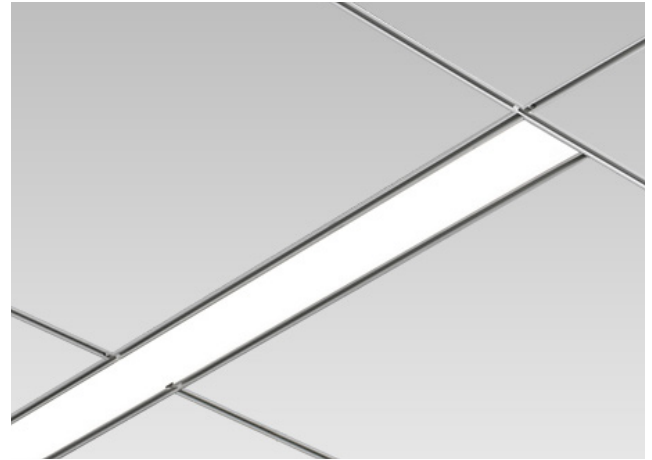
Housing: Cold-rolled steel with die-formed white painted steel reflector
Finish: White is standard; Other Finishes by Request
Lens: Snap-in acrylic in a matte finish

Distribution : Direct Only

Mounting: Compatible with most ceiling including T-bar, screw slot and drywall.

LED & Electrical:

- LM80
- 80 CRI Standard
- L70 reported: > 60,000 @ 55°C
- Nominal Lamp Life: 100,000 hours.
- Features included over voltage protection, surge, short circuit protection and over load protection.
- 0-10V dimming (*Std*)
- Power Factor: +0.95
- Operating Temperature: -4°F (-20°C) ~ 122°F (50°C).
- <ELCU-200> Option
 - Guarantees emergency lighting remains ON or is turned on when power to the control device is lost.
 - Interfaces with fire alarm panel or security system.

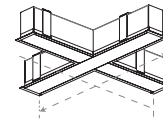
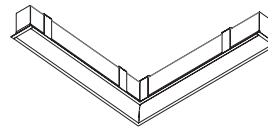


DROP LENS

Sensor Plate

Warranty/Certifications:

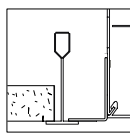
- 5 years limited warranty.
- UL/CUL listed for damp locations
- Listed to UL 1598 and UL 875
- UL listed for use in emergency circuits
- DLC listed
- CEC Compliant EM (*please contact for more information*)
- Assembled in USA (*optional*)
- CCEA City of Chicago Environmental Air approved (*optional*)



For Special Shapes Contact Lumencia

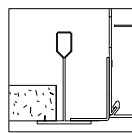
MOUNTING DETAILS

9/16" Grid Mounting Options



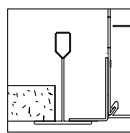
9/16" Grid, Standard Tile:
RCGR in part #

15/16" Grid Mounting Options



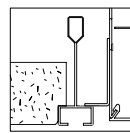
15/16" Grid, Standard
Tile: Specify RCGR in part #

1" Grid Mounting Options



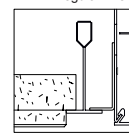
1" Grid, Standard Tile:
Specify RCGR in part #

9/16" Screw Slot Mounting



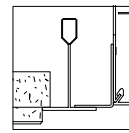
Screw Slot Grid:
Specify SST in part #

9/16" T-bar with
Tegular Tile



9/16" T-bar with Tegular
Tile: Specify SST in part #

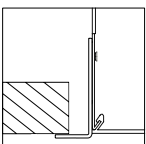
15/16" Grid with
Tegular Tile



15/16" Grid with Tegular
Tile: Specify RCGR in part #

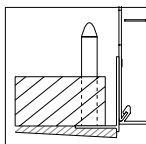
DRYWALL RECESSED CEILING

Flanged Trim



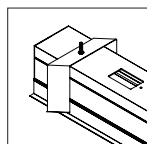
Exposed Flange Detail:
Specify FT in part #

Spackle Flanged Trim



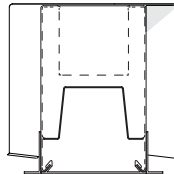
Specify RSF in part #

Rotating Crossbar

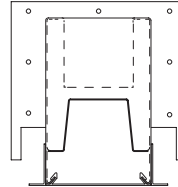


Rotating Crossbar is provided
with RFL and RSF type
as standard

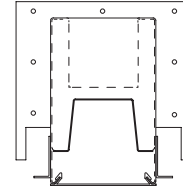
Drywall



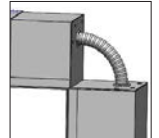
T-bar (RCGR)



Screw Slot (SST)



CW90



Ordering Information

MODEL	LENGTH	DIRECT	CCT	CRI	VOLTAGE
LLINSQ4-RC-RFL 1/2 Flange (Std)	2 2 Foot 3 3 Foot	D665L 665lm/ft D825L 826lm/ft	27K** 30K	8 80 CRI (Std) 9 90 CRI	UNV 120-277V (Std)
LLINSQ4-RC-RSF Trimless Spackle Flange	4 4 Foot 6 6 Foot 8 8 Foot	D1140L 1140lm/ft D1371L 1371lm/ft D1641L 1641lm/ft	35K 40K 50K		347 347V
LLINSQ4-RC-RCGR Recessed Grid Mount - includes 9/16", 15/16", 1" T-bar	CLXX (Custom Length)	CLWP Custom Lumen-Wattage Package (We can offer a custom lumen ft or overall wattage package per your spec. Ask your Lumencia rep for more information)	* If Different CCT needed for Direct/Indirect XXXX **only available with CR190		
LLINSQ4-RC-SST 9/16" Screw Slot, 9/16" T-bar with Tegular tile ceiling					

DRIVERS	EM	EM QTY	OPTIONAL CONNECTORS
Blank 0-10 Dim, 1% Dims Both Simultaneously (Std.) Lutron Mark VII Dimmers and Lutron IP710-DLZ ES566 eldoLED SOLOdrive Natural Dimming to dark, 0-10V, 100% ~ 0.1% dim SD40 40% / 100% Bi-Level Step dim SDXX XX% / 100% Bi-Level Step dim (Specify XX : 10% ~ 70%) PHSR Philips Xitanium Sensor-Ready, Dali 5%~100% dim. PHDL Philips Xitanium DALI driver, Dim to 5% TRIAC Triac Dim. (120V only) TD30/70 30% / 70% / 100% Tri-Level Step dim TDXX/YY XX% / YY% / 100% Tri-Level Step dim (Specify XX, YY : 10% ~ 70%)	Blank None (Std) EM8 1296 LUMEN EM Battery Backup (CEC Compliant EM)* EM15 2430 LUMEN EM Battery Backup (CEC Compliant EM)* EM20 3240 LUMEN EM Battery Backup (CEC Compliant EM)* EM25 4050 LUMEN EM Battery Backup (CEC Compliant EM)* <small>* EM can only be remote mounted for 3ft configuration. Remote box is provided by others. If Chicago Plenum is required, add -CCEA</small>	xSE Number of EMs for Con.Run <small>*Must provide locations. *EM for 4' luminaire. *Separate section required 2SE or specified. Must specify voltage, not available with 347V.</small>	STB Slip Through Bracket (Standard with RFL and RSF Mounting Options) <small>Lumencia offer connectors to make custom shapes, contact us for more information.</small>

OPTIONS	FIXTURE
7W Optional 7 Years Limited Warranty * 10W Optional 10 Years Limited Warranty * ELCU-200 Fail-to-on Emergency lighting, UL924 (Shipped Separately) GLR Fast Blow Fuse (Not available for 347V) GMF SLow Blow Fuse (Not available for 347V) ARRA Assembled in USA for Buy American Act AMS Occupancy Sensor w/ Daylight Harvesting (max. 8' detection mounting height with 13' coverage. Standard will be ON/OFF sensor with dimming wires provided for dimmer switch. For sensor dimming control, please select additional "SO" option) DPMS Daylight Dimming Photo Sensor (0-10 VDC Control, LSR-301-S required. Automatic on/off is not available.) SO Dimming Wires connected to Sensor Only (Available with AMS and DPMS option) LSR-301-S Setup Remote Control for DPMS (Required for DPMS) LSR-301-P Occupant Remote Control for DPMS DROP 1/2" drop lens E1F End feed on one end (Pre-drilled hole for 1/2" fitting) E2F End feed on both ends (Pre-drilled holes for 1/2" fitting)	Blank Matte White RAL #9003 (Std) *BLK Black (RAL #9011) *SV Silver (RAL #9022) **CC Custom Color *CSS Custom Canopy Color (White is Std.) *AMB Anti-Microbial Coating (Matte Skye White) <small>* Additional Charge. ** Additional charge & set up fee.</small>

*Extended limited warranties covers electrical parts only and does not apply to labor, equipment lease, or defect from improper installation or operation

Compatible Dimmers:

Standard 0-10 Dim, 1% Dims Both Simultaneously (Std.): Lumencia recommends Lutron Mark VII Dimmers and Leviton IP710-DLZ.

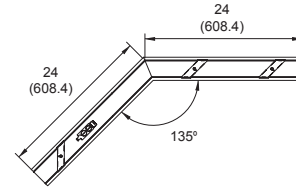
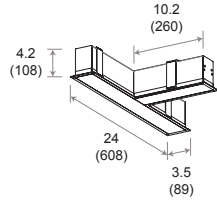
All others: Contact your Lumencia Rep for compatibility.

Controls:

Ask your Lumencia rep about compatibility with your control system

LIT CONNECTOR

Lumencia offer connectors to make custom shapes, contact us for more information.



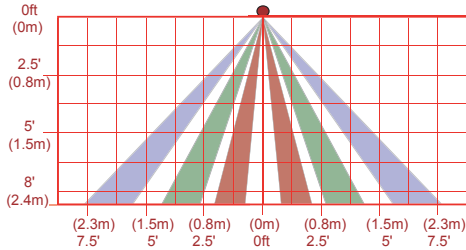
CONFIGURATIONS

* Based on 4FT, 4000K calculation.

Series	Size	Model #	AC Input	Lumen Output (Down)	Lumen Efficient
LLINSQ4-RC	4'	D665L	19.8W	2419.2 lm (100%)	122.18 lm/W
		D825L	29.7W	3737.5 lm (100%)	125.84 lm/W
		D1140L	39.6W	4964.4 lm (100%)	125.36 lm/W
		D1371L	52.8W	6147.4 lm (100%)	116.4 lm/W
		D1614L	59.4W	7015.7 lm (100%)	118.10 lm/W

OUTPUT CURRENT

SW1	SW2	Bi-Level		Tri-Level (Default)	
		Config Range	Default	Config Range	Default
Close	Open	10% - 70%	40%	10% - 70%	30%
Open	Close	10% - 70%	40%	10% - 70%	70%
Close	Close	100%	100%	100%	100%
Open	Open	0%	0%	0%	0%



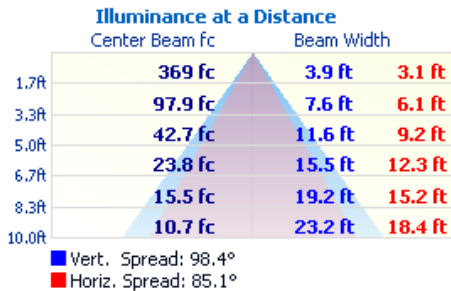
AMS coverage pattern (side view)

* The coverage shown in the diagram is maximum. AMS is designed to detect small motion when mounted within 6' occupants.

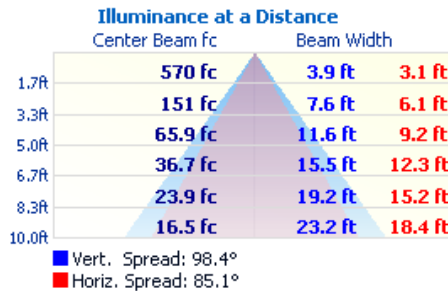
PHOTOMETRIC DATA:

* Based on 4FT, 4000K calculation.

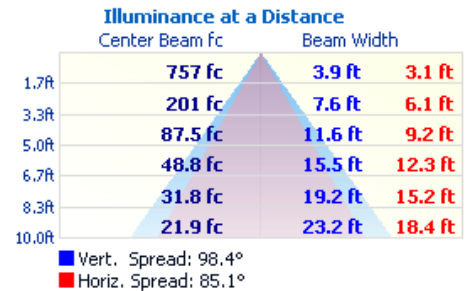
LLINSQ4-RC-4-D665L



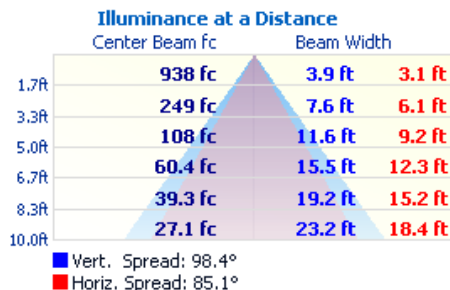
LLINSQ4-RC-4-D825L



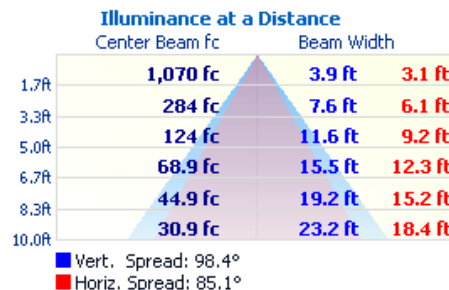
LLINSQ4-RC-4-D1140L



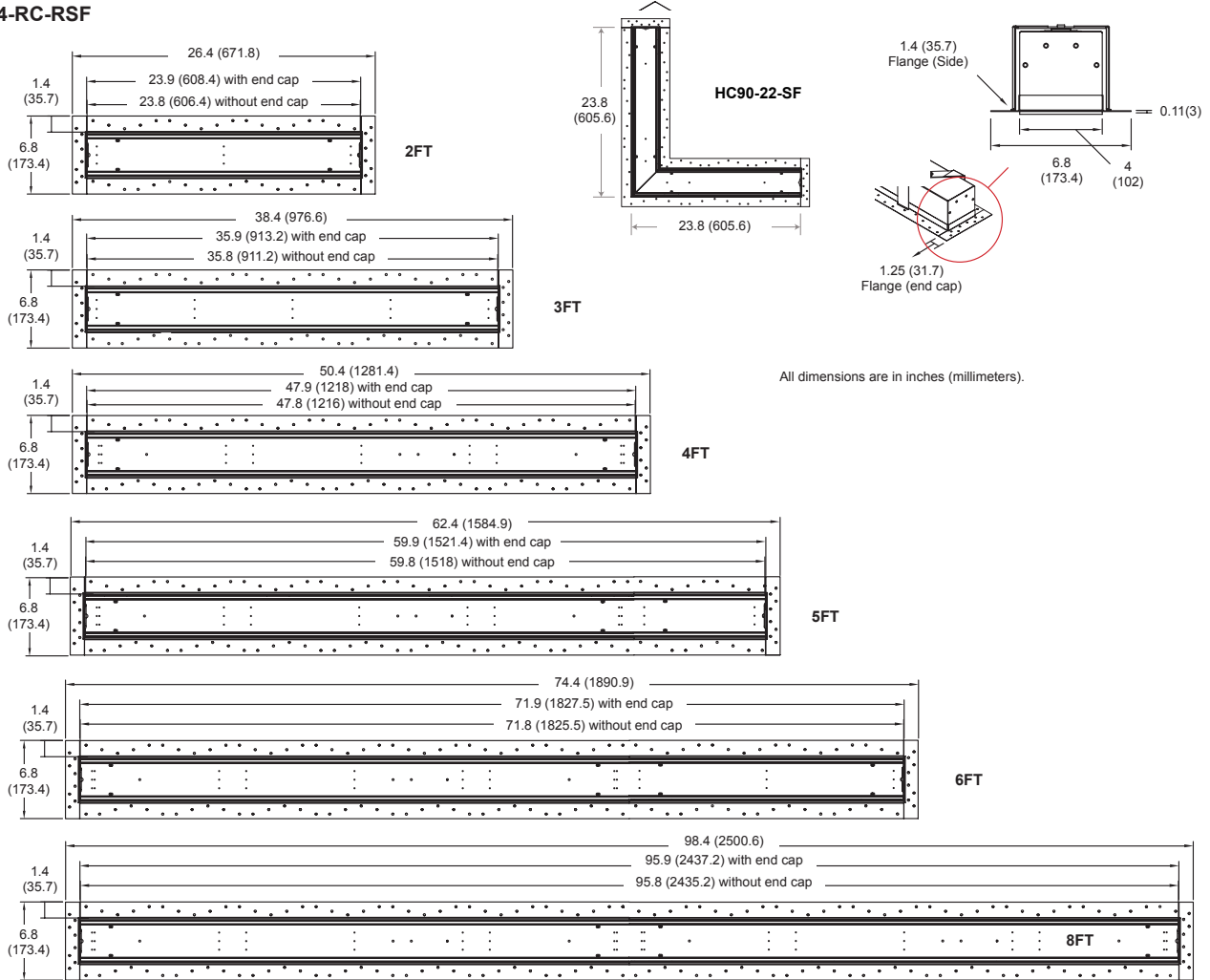
LLINSQ4-RC-4-D1371L



LLINSQ4-RC-4-D1614L

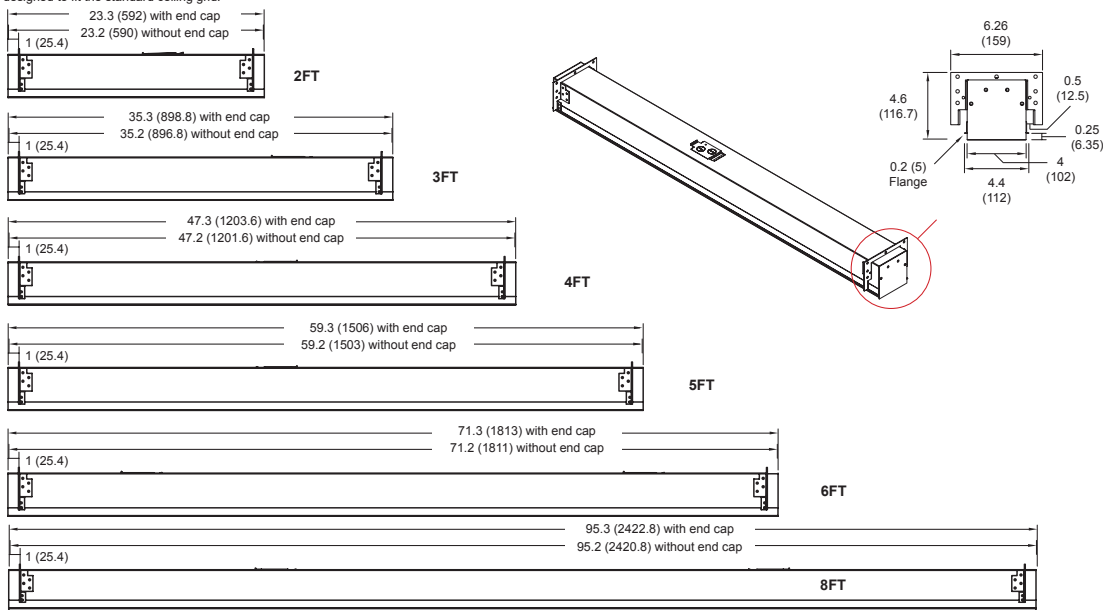


LLINSQ4-RC-RSF

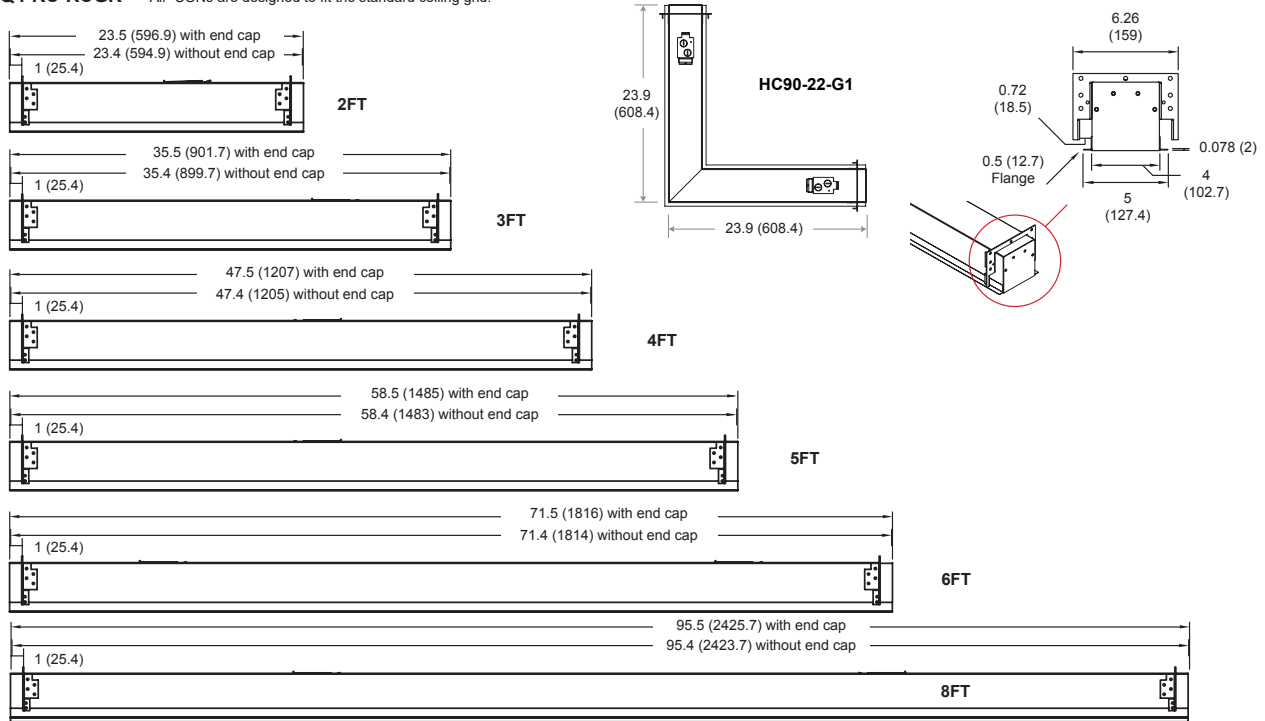


LLINSQ4-RC-SST

* All -CONs are designed to fit the standard ceiling grid.



LLINSQ4-RC-RCGR * All -CONs are designed to fit the standard ceiling grid.



LLINSQ4-RC-RFL

All dimensions are in inches (millimeters).

