



Job Name: _____

Type: _____

Part #: _____

Notes: _____

LLMWS12-30W-5MCT

12" Sconce with Selectable Light Direction:
Up, Down, or Up & Down

Construction:

Body Material: Die-cast Aluminum

Lens: Clear Glass Lens

Finishes: Black (BLK) or White (WHT)

Mounting: Wall Mount

- Mounts to 3" or 4" J-box
- Covers standard recessed box

Dimensions: 11.70" SQ x 1.98"E

Light Source: 120~277V/30W/5MCT/90CRI/TRIAC

* Up Light is 15W/1,350lm

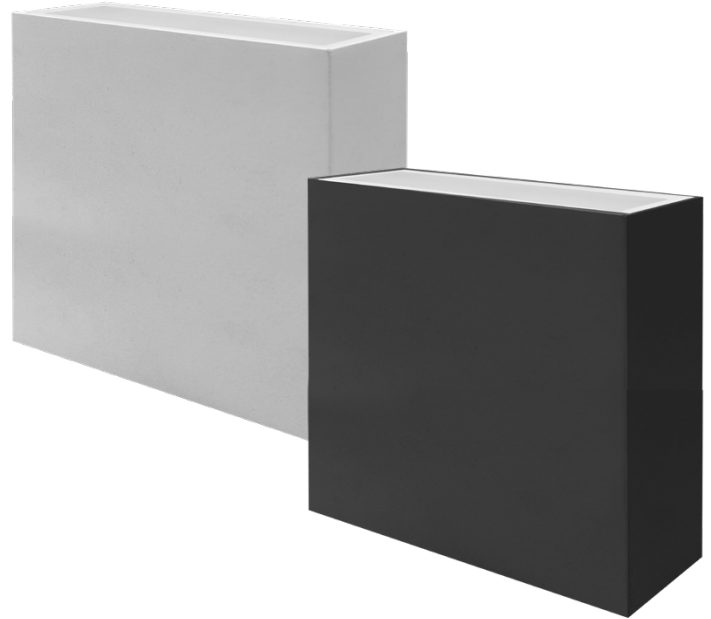
* Down Light is 15W/1,350lm

- Select Distribution - Up Only, Down Only, or Up/Down
- 5 MCT: Selectable Color Temperatures:
27K/30K/35K/40K/50K
- Beam Angle: 120°
- Built in 6Kv Surge Protector
- THD: 0.9, 50/60Hz

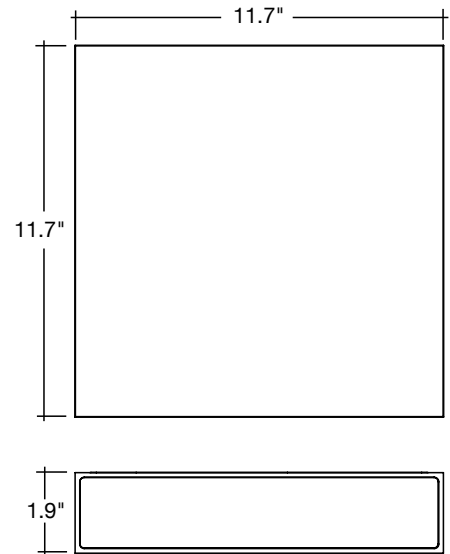
Dimming: TRIAC (120V Only). *Lumencia recommends the use of a UL or ETL LED Ready Dimmer. Please contact Lumencia for a complete list of compatible dimmers. Dimming capabilities will vary depending on the dimmer control, load, and circuit installation. We recommend testing dimmers prior to installation for larger projects.*

Notes/Certifications/Warranty:

- Universal Voltage (UNV) 120~277V
- Operating Temperature: -40°-122°F
- Average Life L₇₀ of 50,000 Hours
- ETL Listed for Wet Locations
- IP65
- Approved for CA T24
- FCC CFR 47 Part 15 compliant
- 5 Year Limited Warranty



DIMENSIONS



ORDERING INFORMATION

| Part # | Finish |
|------------------|------------|
| LLMWS12-30W-5MCT | BLK WHT |