



Job Name: \_\_\_\_\_

Type: \_\_\_\_\_

Part #: \_\_\_\_\_

Notes: \_\_\_\_\_

## LLRRLL25

2.5" Round Rotational LED Linear

**Housing:** Extruded Aluminum with Die-Formed Painted Steel Reflector

**Finish:** White Standard; Other Finishes by Request

**Lens:** Acrylic in a matte finish

**Mounting:** Pendant and Wall Mount

### LED & Electrical:

- LM80
- 80 CRI Standard
- L70 reported: > 60,000 @ 55°C
- Nominal Lamp Life: 100,000 hours.
- Features include over voltage protection, surge, short circuit protection and over load protection.
- 0-10V dimming Standard
- Power Factor: +0.95
- Operating Temperature: -4°F (-20°C) ~ 122°F (50°C).
- <ELCU-200> Option
  - Guarantees emergency lighting remains ON or is turned on when power to the control device is lost.
  - Interfaces with fire alarm panel or security system.

### Warranty/Certifications:

- 5 years limited warranty.
- UL/CUL listed for damp locations
- Listed to UL 1598 and UL 875
- Assembled in USA *(optional)*

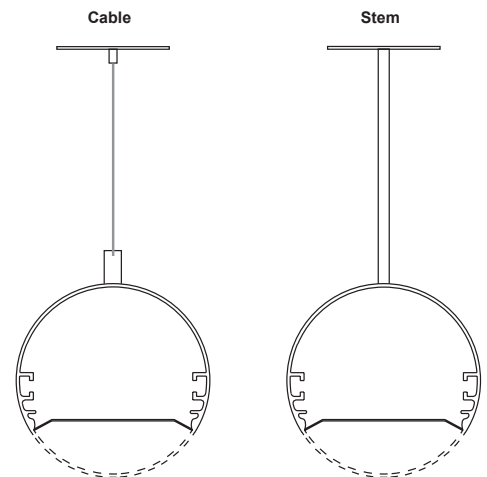
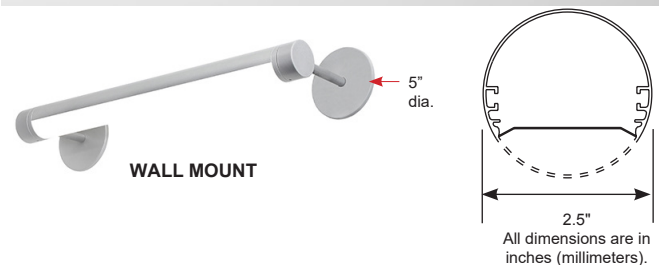


### CONFIGURATIONS

\* Based on 4FT, 4000K calculation.

Series	Size	Model #	AC Input	Fixture Lumen Output (4000K)	Lumen Efficiency (4000K)
LLRRLL25	4'	598L	19.8W	2395.8 lm	121 lm/W
		898L	29.7W	3593.7 lm	
		1197L	39.6W	4791.6 lm	
		1597L	52.8W	6388.8 lm	
		1796L	59.4W	7187.4 lm	

	Multiplier		
CCT	3000K	3500K	5000K
Down only	0.9642	0.9822	1.0357



### WEIGHT

Item	lbs	kg
LLRRLL25-2	5.08	2.3
LLRRLL25-3	6.01	2.72
LLRRLL25-4	6.76	3.06
LLRRLL25-8	10.88	4.93



Job Name: \_\_\_\_\_

Type: \_\_\_\_\_

Part #: \_\_\_\_\_

Notes: \_\_\_\_\_

## Ordering Information

MODEL	TYPE	LENGTH	LED	ANGLE	CCT	CRI	VOLTAGE
LLRRLL25	<b>P</b> Pendant (Select Ceiling Type & Suspension Method) <b>W5</b> 5" Wall Mount <b>W12</b> 12" Wall Mount	<b>2</b> 2 Foot <b>3</b> 3 Foot <b>4</b> 4 Foot <b>6</b> 6 Foot <b>8</b> 8 Foot <b>CLXX</b> (Custom Length)	<b>598L</b> 598lm/ft <b>898L</b> 898lm/ft <b>1197L</b> 1197lm/ft <b>1597L</b> 1597lm/ft <b>1796L</b> 1796lm/ft <b>CLWP</b> Custom Lumen-Wattage Package (We can offer a custom lumen /ft or overall wattage package per your spec. Ask your Lumencia rep for more information)	<b>(Blank)</b> Down (Std) <b>45</b> 45° <b>90</b> 90° <b>135</b> 135° <b>180</b> 180°	<b>27K**</b> <b>30K</b> <b>35K</b> <b>40K</b> <b>50K</b> <small>* If Different CCT needed for Direct/Indirect XX/XX  **only available with CRI90</small>	<b>(Blank)</b> 80 CRI (Std) <b>9</b> 90 CRI	<b>UNV</b> 120-277V <b>347</b> 347V

DRIVERS	EM	EM QTY	OPTIONAL CONNECTORS	OPTIONS
<b>(Blank)</b> 0-10 Dim, 1% Dims Both Simultaneously (Std.) Lutron Mark VII Dimmers and Lutron IP710-DLZ <b>ES566</b> eldoLED SOLOdrive Natural Dimming to dark, 0-10V, 100% ~ 0.1% dim <b>SD40</b> 40% / 100% Bi-Level Step dim <b>SDXX</b> XX% / 100% Bi-Level Step dim (Specify XX :10% ~ 70%) <b>PHSR</b> Philips Xitanium Sensor-Ready, Dali 5%~100% dim. <b>PHDL</b> Philips Xitanium DALI driver, Dim to 5% <b>TRIAC</b> Triac Dim. (120V only) <b>TD30/70</b> 30% / 70% / 100% Tri-Level Step dim <b>TDXX/YY</b> XX% / YY% / 100% Tri-Level Step dim (Specify XX, YY : 10% ~ 70%)	<b>(Blank)</b> None (Std) <b>EM10-LED</b> Integrated 1620 LUMEN EM Battery Backup (Not Available with 2ft Configurations due to Spacing)	<b>xSE</b> Number of EMs for Con.Run <small>*Must provide locations.  *EM for 4' luminaire.  *Separate section required ZSE or specified. Must specify voltage, not available with 347V.</small>	<b>LC</b> Non-lit 90° coupling <b>TC</b> Non-lit T-shape coupling <b>XC</b> Non-lit X-shape coupling <b>LC-VD</b> Non-lit 90° vertical drop <b>LC-BT</b> Non-lit 90° bottom <b>TC-VD</b> Non-lit T-shape vertical drop <small>Lumencia offer connectors to make custom shapes, contact us for more information.</small>	<b>7W Optional</b> 7 Years Limited Warranty * <b>10W Optional</b> 10 Years Limited Warranty * <b>GLR</b> Fast Blow Fuse (Not available for 347V) <b>GMF</b> SLOW Blow Fuse (Not available for 347V) <b>ARRA</b> Assembled in USA for Buy American Act <b>AMS</b> Occupancy Sensor w/ Daylight Harvesting (max. 8' detection mounting height with 13' coverage. Standard will be ON/OFF sensor with dimming wires provided for dimmer switch. For sensor dimming control, please select additional "SO" option) <b>DPMS</b> Daylight Dimming Photo Sensor (0-10 VDC Control, LSR-301-S required. Automatic on/off is not available.) <b>SO</b> Dimming Wires connected to Sensor Only (Available with AMS and DPMS option) <b>LSR-301-S</b> Setup Remote Control for DPMS (Required for DPMS) <b>LSR-301-P</b> Occupant Remote Control for DPMS

\*Extended limited warranties covers electrical parts only and does not apply to labor, equipment lease, or defect from improper installation or operation

FINISH	FIXTURE	CEILING TYPE (Pendant Only)	SUSPENSION (Pendant Only)	CORD/CANOPY (Pendant Only)
<small>Std is White Fixture, White Cord, White Canopy</small> <b>WH</b> Matte White RAL#9003 <b>*SL</b> Silver RAL#9022 <b>**BLK</b> Black RAL#9011 <b>**AMC</b> Anti-Microbial Coating (Matte White) <b>**RAL#</b> Custom Color <small>*Additional Charge.  ** Additional charge &amp; set up fee.</small>	<b>PENDANT CONFIGURATION</b>	<b>T15</b> T-bar 15/16" <b>T9</b> T-bar 9/16" <b>HC</b> Hard Ceiling <b>HS</b> Hard Sloped Ceiling	<b>AC4</b> 4' Adjustable Aircraft Cable <b>AC8</b> 8' Adjustable Aircraft Cable <b>ST2</b> 2' Stem <b>ST4</b> 4' Stem	<b>(Blank)</b> White Cord/White Canopy <b>B</b> Black Cord/Black Canopy <b>LK-</b> Black Cord/Black Canopy <b>CC-</b> Custom Configuration <small>*Contact Us for more info</small>

## Compatible Dimmers:

Standard 0-10 Dim, 1% Dims Both Simultaneously. Lumencia recommends Lutron Mark VII Dimmers and Leviton IP710-DLZ.

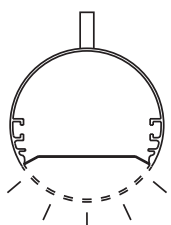
All others: Contact your Lumencia Rep for compatibility.

## Controls:

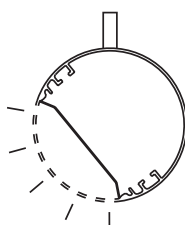
Ask your Lumencia rep about compatibility with your control system

Fixture can be customized: angle 45°, 90°, 135°, 180° (up light).

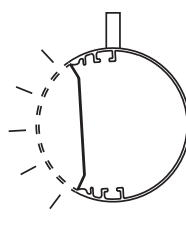
Field adjustable using Allen key (provided)



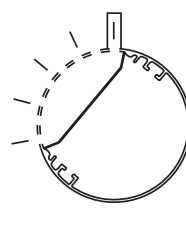
Standard



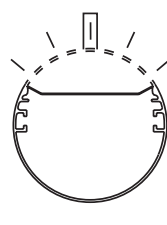
45°



90°



135°



180° (Up)

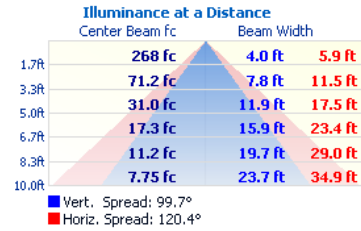


2022.09

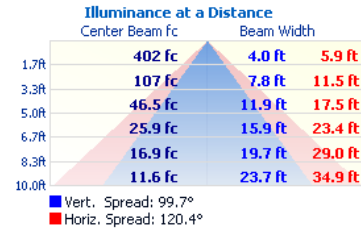
## PHOTOMETRIC DATA:

\* Based on 4FT, 4000K calculation.

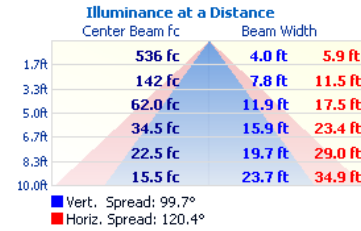
### LLRDO25-4-598L



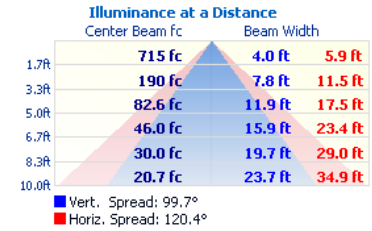
### LLRDO25-4-898L



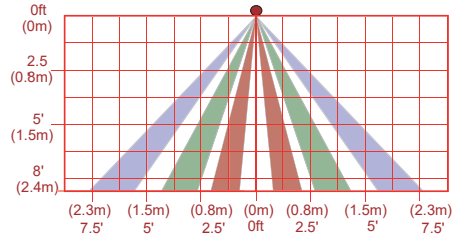
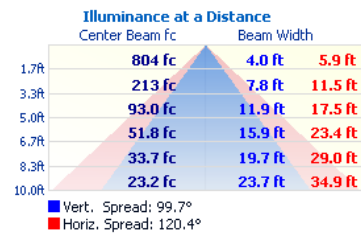
### LLRDO25-4-1197L



### LLRDO25-4-1597L



### LLRDO25-4-1796L

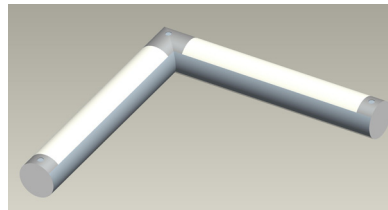
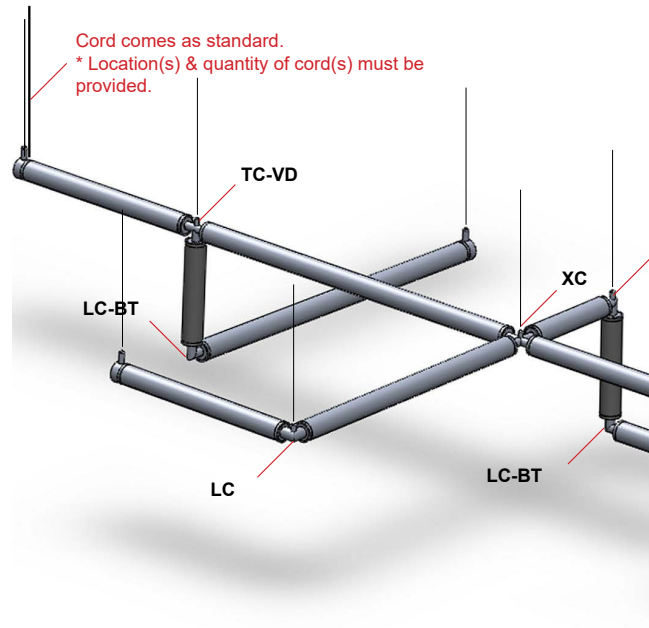


**AMS coverage pattern (side view)**

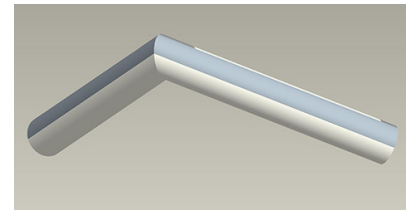
\* The coverage shown in the diagram is maximum.

AMS is designed to detect small motion when mounted within 6' occupants.

## Connectors Available for For Special Shapes. Contact Lumencia



RHC90 (uplight)



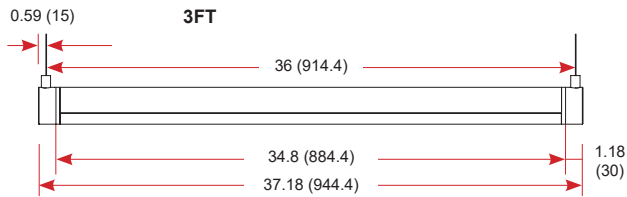
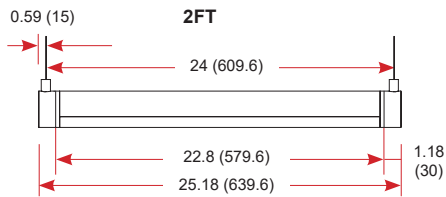
RHC90 (downlight)

Job Name: \_\_\_\_\_

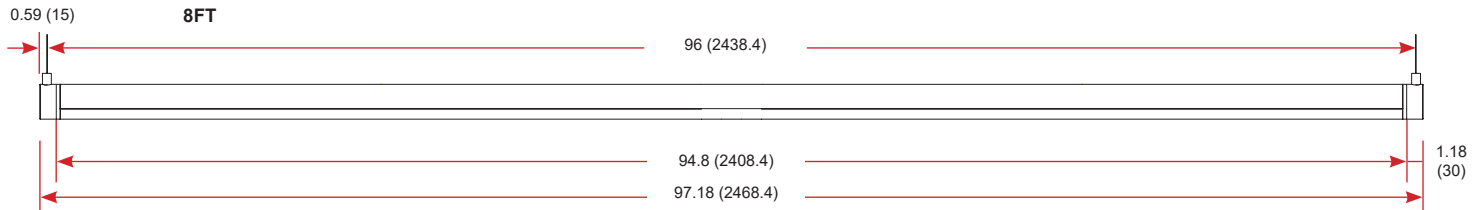
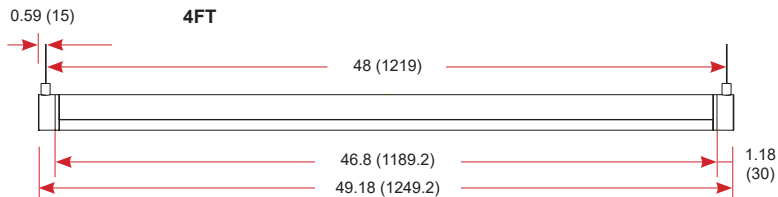
Type: \_\_\_\_\_

Part #: \_\_\_\_\_

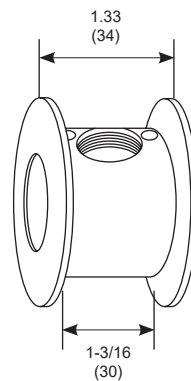
Notes: \_\_\_\_\_



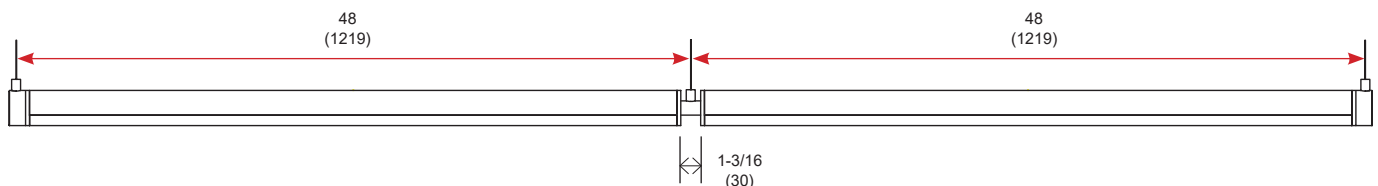
All dimensions are in inches (millimeters).



Coupling



Coupling for continuous run



Total run = 97.05 (2465)  
 Calculation: (1245-30)x2+30 = 2460  
 \* Recommended to calculate in mm. for precised measurement.